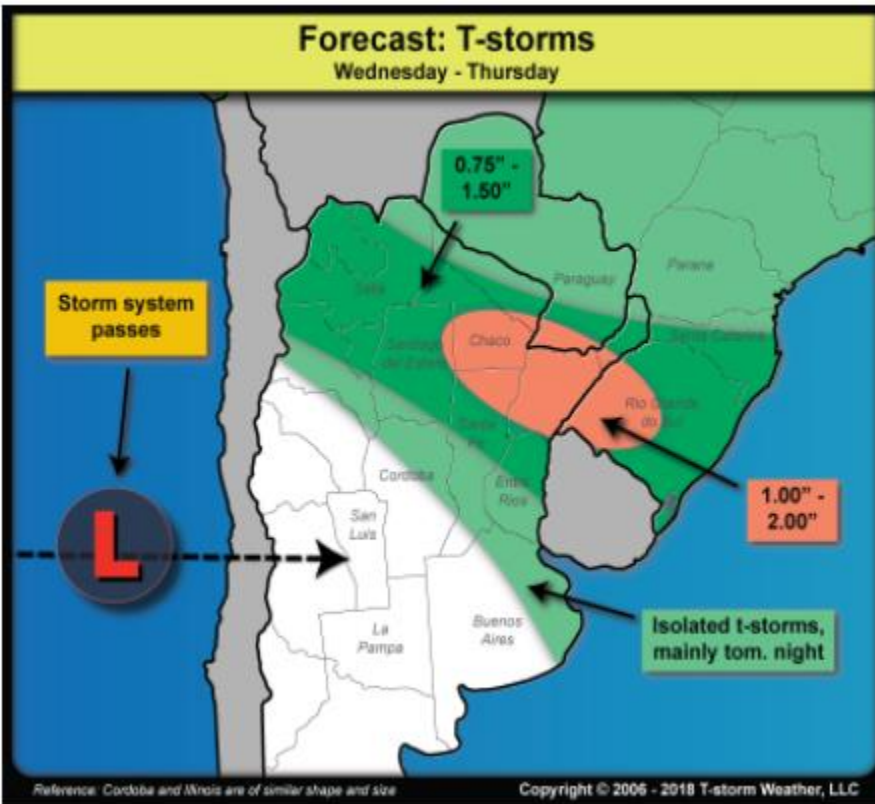
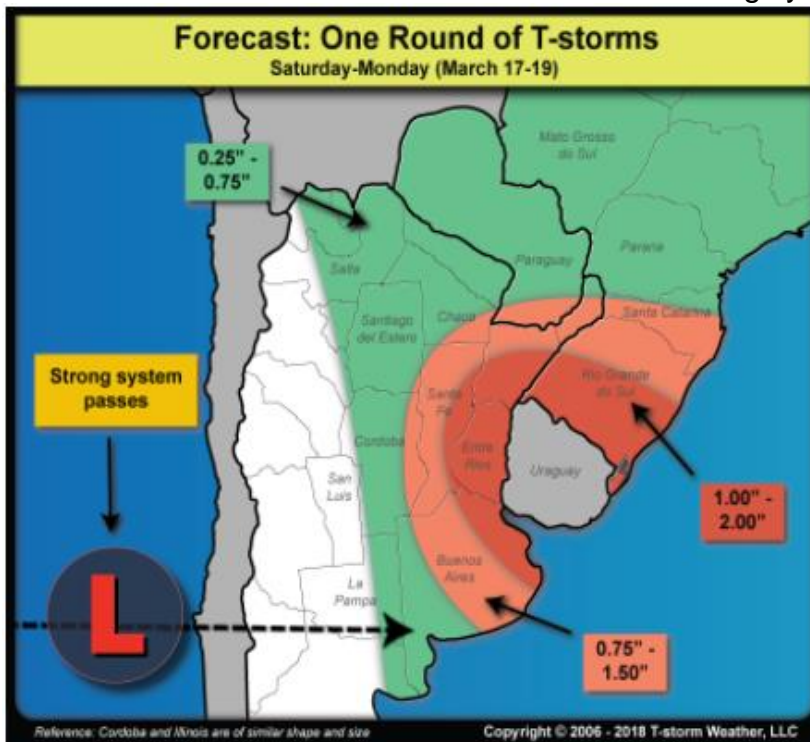


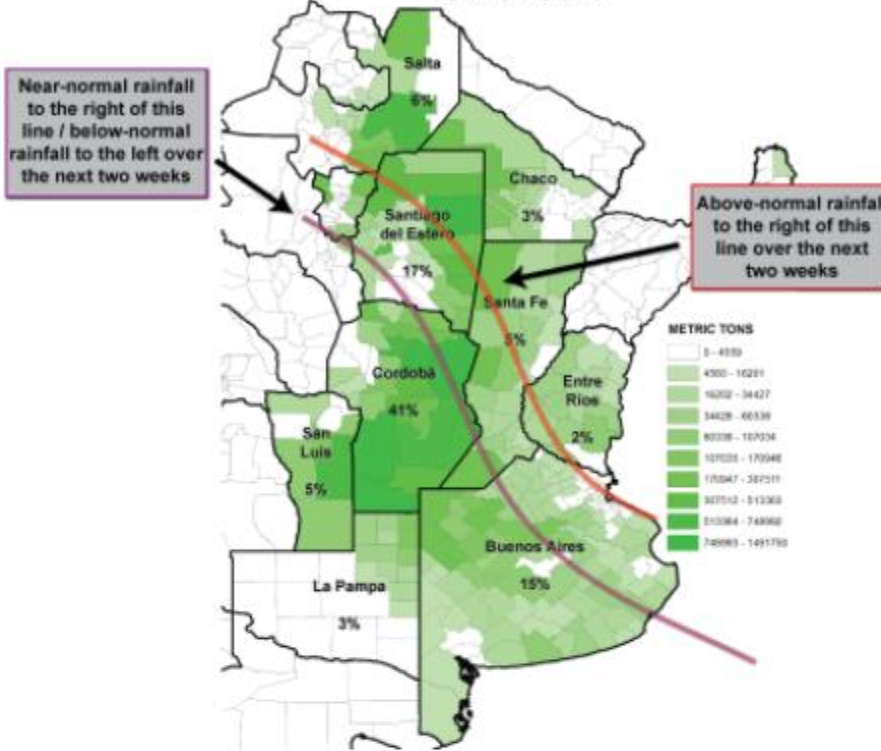
In Argentina, t-storms focus on northern areas through Thursday (especially tomorrow night and Thursday). Four to six days of drying follow before some more t-storms follow within next Friday-Sunday.



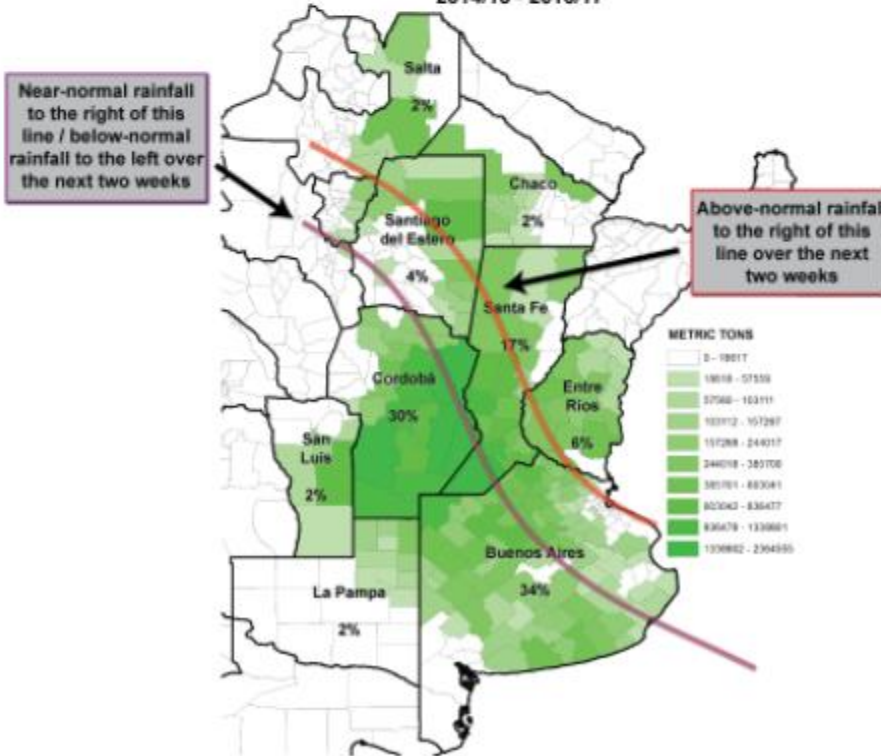
T-storms then affect areas to the south when a strong system passes Sat.-Sun.



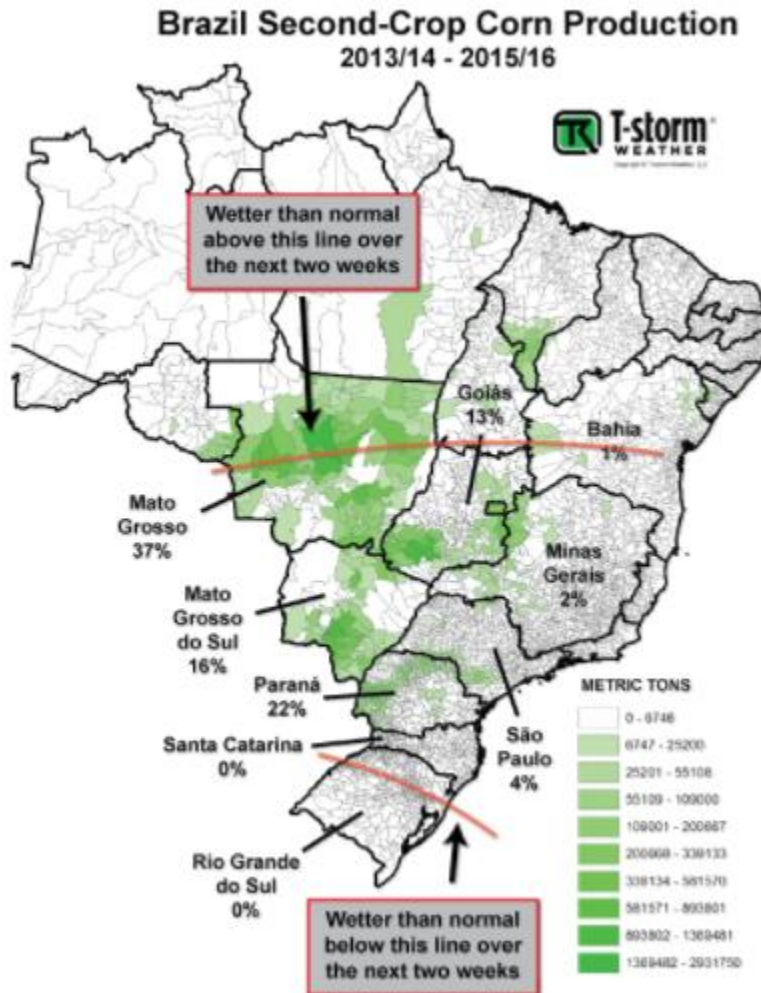
Argentina Late-Crop Corn Production 2014/15 - 2016/17



Argentina Soybean Production 2014/15 - 2016/17



In Brazil, heavy t-storms focus on northern Mato Grosso over the next few days, and Thursday and Sunday in Rio Grande do Sul. Less rain occurs between each area, but t-storms follow next week and beyond as systems exit Argentina and interact with muggy air.



In the U.S., several systems move across the central U.S. over the next two weeks, resuming Friday-Saturday. Areas of rain result, especially in the northern Plains, Corn Belt, and Delta, but less-so in driest HRW wheat areas of the southwest Plains where influxes of dry air from the desert Southwest limit humidity. That said, there are too many systems looming to the west to rule out a significant event for drought-stricken HRW wheat, especially since the climate turns considerably wetter in late-March and early-April. As such, rain chances will need to be monitored, especially late next week or weekend, then again several days later.

